



SALES & LETTINGS



Millbrook Walk, Inchbrook, Stroud
Gloucestershire GL5 5HE

£460,000

- Stunning Hillside Location
- Retirement Village situated on a 21 Acre site
- Beautifully Presented Three Double Bedroom Home
- Re-fitted Kitchen
- Communal Areas and Schedule of Activities Available
- Mutually Owned Village
- 24 hour On-site Emergency Call Monitoring & Response
- Vibrant Community with as much Involvement as you would like

The Property

TG Sales are delighted to offer to the market this very well presented three-bedroom semi-detached home, ideally located within the popular Woodchester Retirement Village in the charming hamlet of Inchbrook.

This attractive property offers comfortable and well-planned accommodation, finished to a high standard throughout. The house features a bright and welcoming living space, a modern fitted kitchen, and three well-proportioned bedrooms, complemented by a contemporary bathroom.

Set within beautifully maintained communal grounds, The Award Winning Woodchester Retirement Village provides a peaceful and friendly environment, designed for relaxed and secure living.

The location enjoys a pleasant village feel while remaining conveniently close to local amenities, countryside walks, and transport links.

An excellent opportunity to acquire a quality home in a sought-after retirement community, early viewing is highly recommended.



Directions

SATNAV postcode GL5 5HE

Tenure Freehold

Local Authority Gloucester

Services Electric, Mains Gas, Mains Drainage and Water are all believed to be connected to the property.

Council tax band D



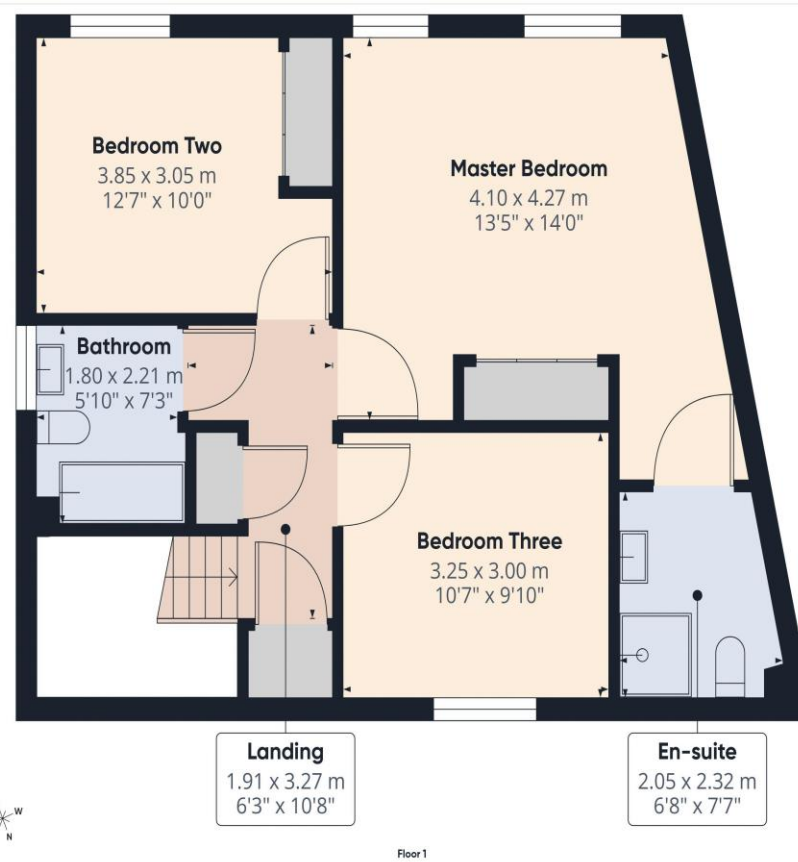


Approximate total area⁽¹⁾
63.4 m²
682 ft²

(1) Excluding balconies and terraces

Calculations reference the RICS IPMS 3C standard. Measurements are approximate and not to scale. This floor plan is intended for illustration only.

GIRAFFE360



Approximate total area⁽¹⁾
56.3 m²
607 ft²

(1) Excluding balconies and terraces

Calculations reference the RICS IPMS 3C standard. Measurements are approximate and not to scale. This floor plan is intended for illustration only.

GIRAFFE360

Head Office
TG Sales & Lettings
6 Blacksmith Lane
Churchdown
Gloucestershire
GL3 2EU
Tel: 01452 311776
Email: info@tgres.co.uk
Website: www.tgres.co.uk



Score	Energy rating	Current	Potential
92+	A		
81-91	B		83 B
69-80	C	73 C	
55-68	D		
39-54	E		
21-38	F		
1-20	G		

T G Sales & Lettings and any parties they are acting for hereby give you notice that: These details are for guidance only and cannot guarantee the accuracy of any description, dimension, condition or any required permission for occupation and use. It is not company policy to test any services or appliances in properties offered for sale and these should be verified by the purchaser's solicitors. T G Sales & Lettings will not be liable for any loss arising from the use of these details. No responsibility is taken for any errors, omissions or misstatements within these particulars. It should not be assumed that the property has all the necessary planning, building regulation or other consents. These particulars do not form any part of any offer or contract and must not be relied upon as statements or representations of fact. Buyers are advised to seek advice from their legal representation. T G Sales & Lettings is a limited liability partnership registered in England and Wales. Registered Number: 9763381 Registered Office: 48 Stroud Road, Gloucester, Gloucestershire, GL1 5AJ.